



Global Citizen, LLC Graduate Fellowship at the UNC Gillings School of Global Public Health

MORE THAN A FELLOWSHIP, THIS IS AN OPPORTUNITY TO ADVANCE YOUR PUBLIC HEALTH AND SOCIAL IMPACT CAREER WHILE CONTRIBUTING TO MEANINGFUL CHANGE FOR A BETTER WORLD!

What does Global Citizen, LLC do?

Global Citizen, LLC is a strategic, equity-centered consulting, coaching, and training for transformation firm led by Katherine L. Turner, MPH, Founding President and Gillings alum and adjunct professor. Our firm works globally and across the U.S. to develop inclusive excellence leadership skills and strengthen leaders' capacity to drive organizational transformation and social impact *for a better world*.



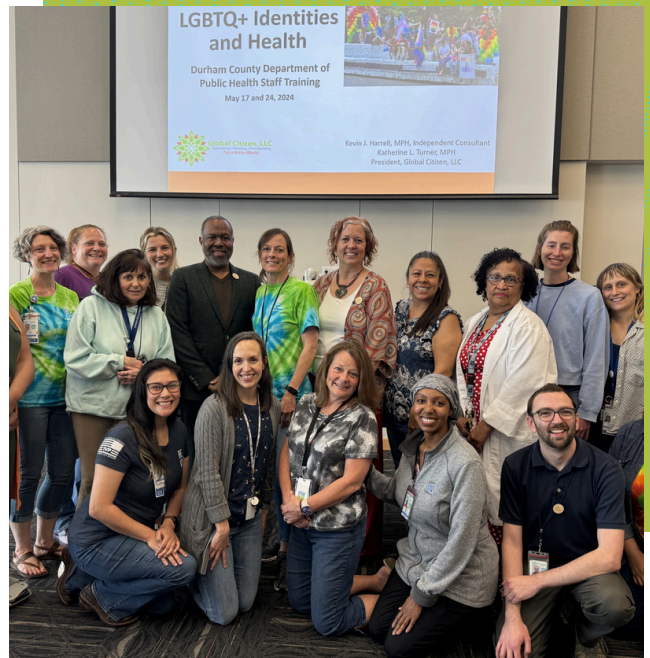
Fellowship Overview

- 12 month commitment
- **Includes your Gillings MPH Practicum**
- Primarily remote, occasional in-person opportunities in the Triangle, NC area



Benefits offered

- \$3,000 stipend (quarterly payments) + profit-sharing opportunities
- 5-10 hrs/week; flexible schedule
- Gain professional skills, mentoring, and networking opportunities



Who Should Apply?

- ✓ First-year Gillings MPH students (residential or online)
- ✓ Passionate about public health, equity, and global impact
- ✓ Proactive, organized, innovative, and strong communicators

**Priority Deadline for Applications:
Monday, March 3, 2025**



What You'll Do

- Conduct research and draft educational and training materials
- Assist with event design, planning, and promotion
- Create social media and other content
- Contribute to diverse, high-impact consulting projects



Gain Experience

- Addressing disparities and advancing racial, gender, LGBTQ+ equity and intersectional DEIB
- Strategic organizational assessments, visioning, planning, and execution
- Leadership and organizational development
- Consulting, coaching, and training capacity building

Ready to become a more experienced and skillful global health leader?
Scan the QR code or visit our website to learn more and apply today!

